



A BRIEF INTRODUCTION of

SFP Heavy Industries Co., Ltd.

Sincerity **P**romise **P**rogress



Contents

1. SPP Group
2. SPP Heavy Industries Co., Ltd.
3. Organization Chart
4. Design Abilities
5. Certificates
6. Maximum Capacity Overview
7. Major Facilities
8. Experience List

1. SPP Group



1 Shipbuilding Co., Ltd.
(Shipbuilding)

3 Construction Co., Ltd.
(Construction)

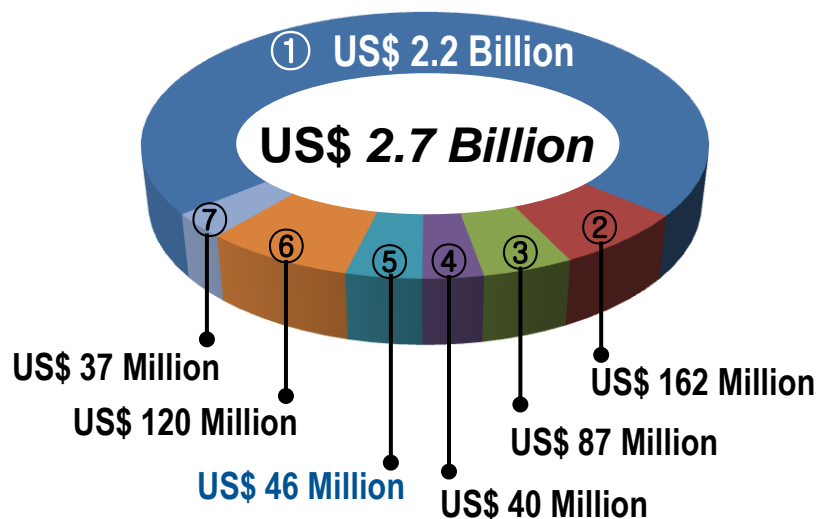
6 Youlchon Energy Co., Ltd.
(Forging & Casting)

2 Machine Tech Co., Ltd.
(Crane)

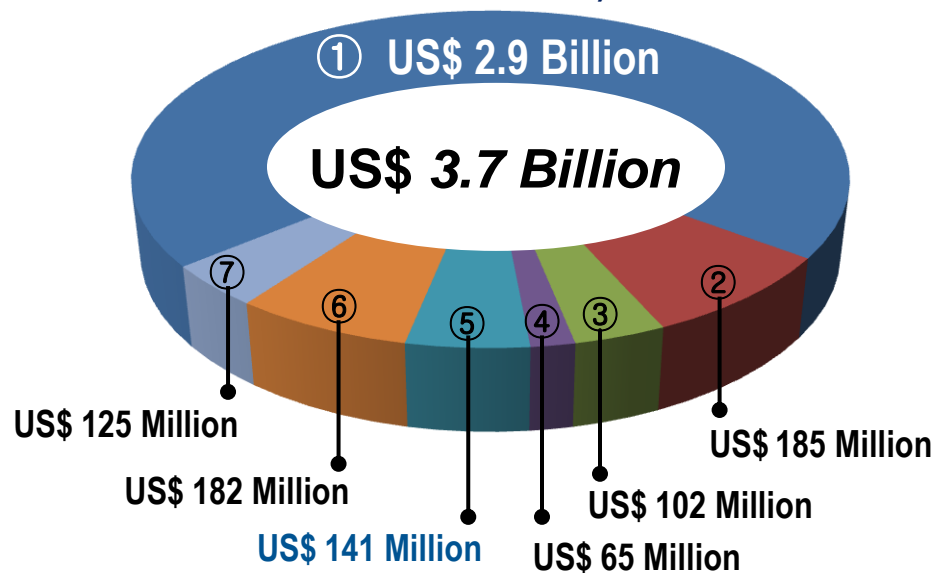
4 Shipping Co., Ltd.
(Shipping)

7 Steel Pipe Co., Ltd.
(Spiral & Welded Type Steel Pipe)

5 Heavy Industries Co., Ltd.
(Column & Tower, Heat Exchanger, Reactor,
Pressure Vessel, Waste Heat Boiler with Steam Drum)



2010 Year



2011 Year

2. SPP Heavy Industries Co., Ltd.

2-1. History

Jan. 2009. Establishment of SPP Heavy Industries Co., Ltd.

Chemical Process Equipment

- Tower, Heat Exchanger, Reactor, Pressure Vessel
- Waste Heat Boiler with Steam Drum

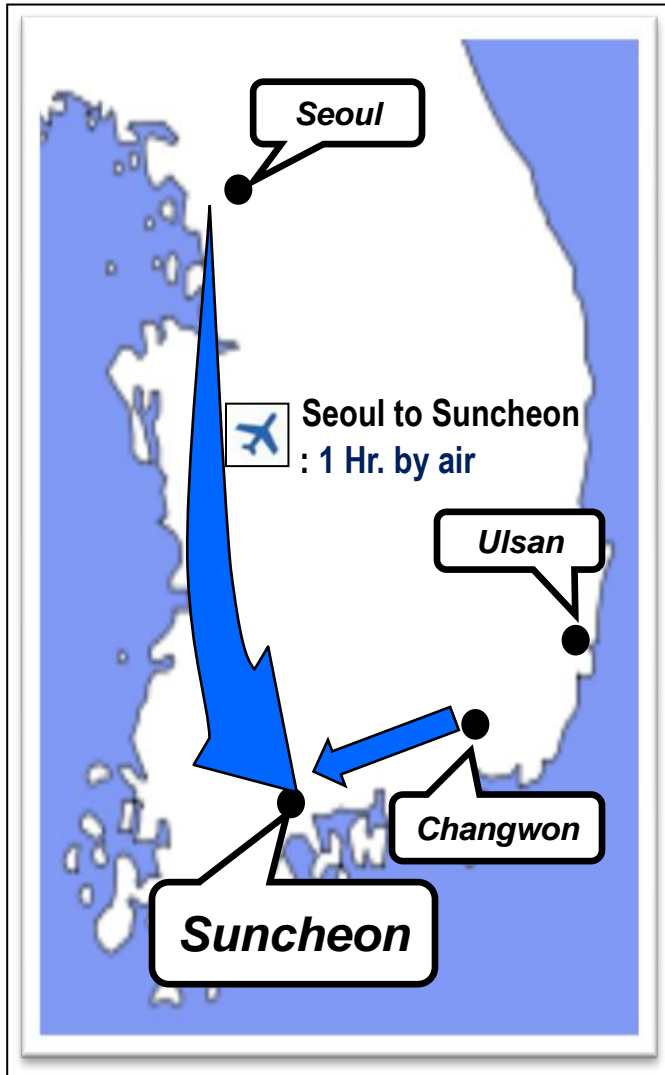
Dec. 2009. Acquired ISO 9001 / 14001 Certificate

Dec. 2009. Acquired OHSAS 18001 Certificate

Feb. 2010. Acquired ASME Stamp (S, U, U2)



2-2. Location



Seoul Office (Sales Division)

19F. Landmark Tower, #837-36, Yeoksam-dong,
Gangnam-gu, 135-937, Seoul, Korea

Contact Point (Sales Division)

- H. T. Lim / htlim@spp.co.kr / Tel. No. 82-2-2112-8382
- J. B. Kim / jbkim@spp.co.kr / Tel. No. 82-2-2112-8381
Fax. No. : 82-2-2112-8305

Head Office & Manufacturing Shop

Yulchon Industrial Complex,
3Block Sinseong-ri, Haeryong-myeon,
Suncheon, Jeollanam-do, 540-856, Korea

Website : <http://www.spphi.co.kr>

Note



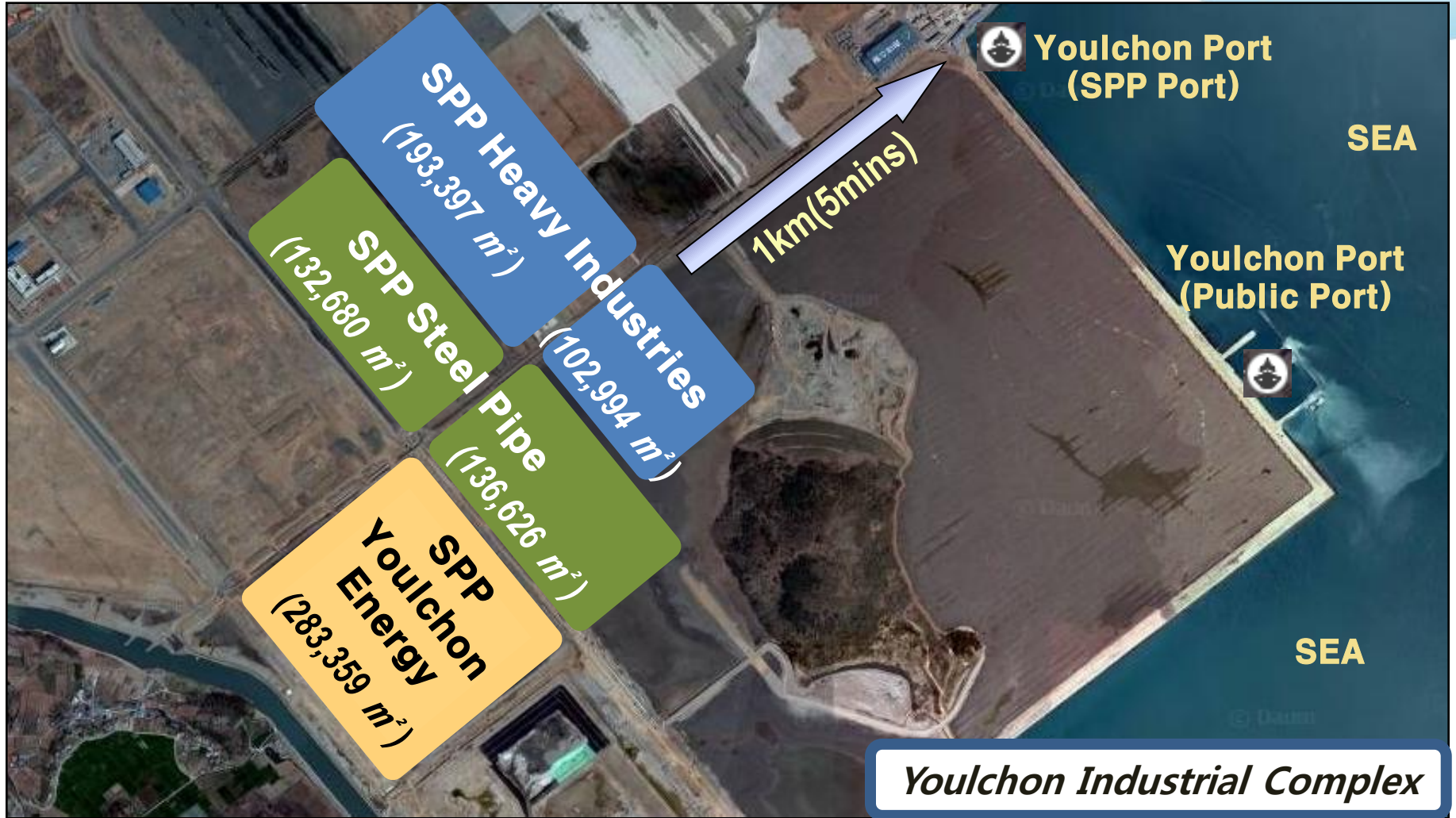
Changwon to Suncheon : 1.5 Hr. by car



Shop to SPP Yulchon Port : 5mins(1km)



2-3. Panoramic Photograph



2-4. Shop Photograph



Head Office



Plant



Bay 1

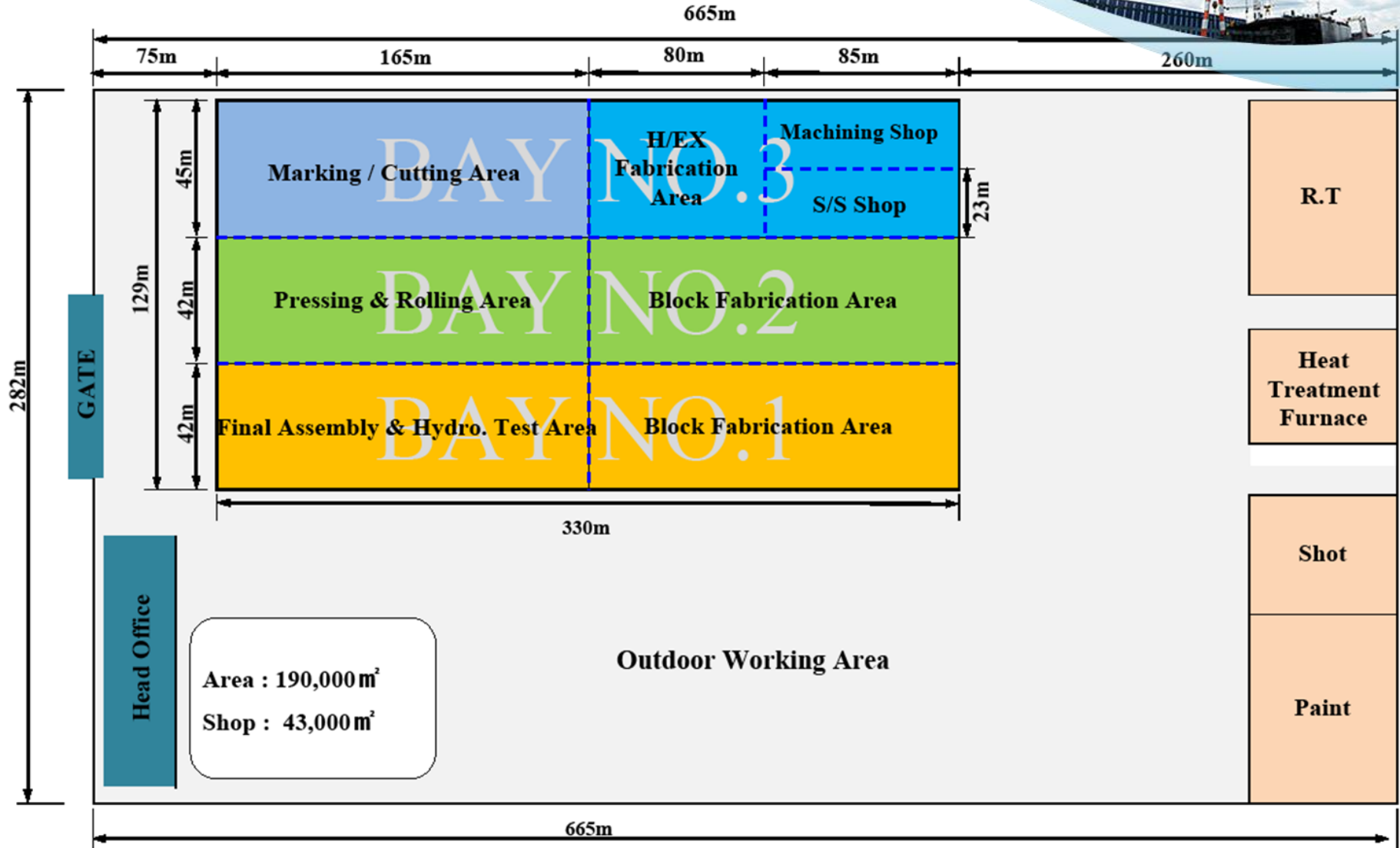


Bay 2



Bay 3

2-5. Shop Layout

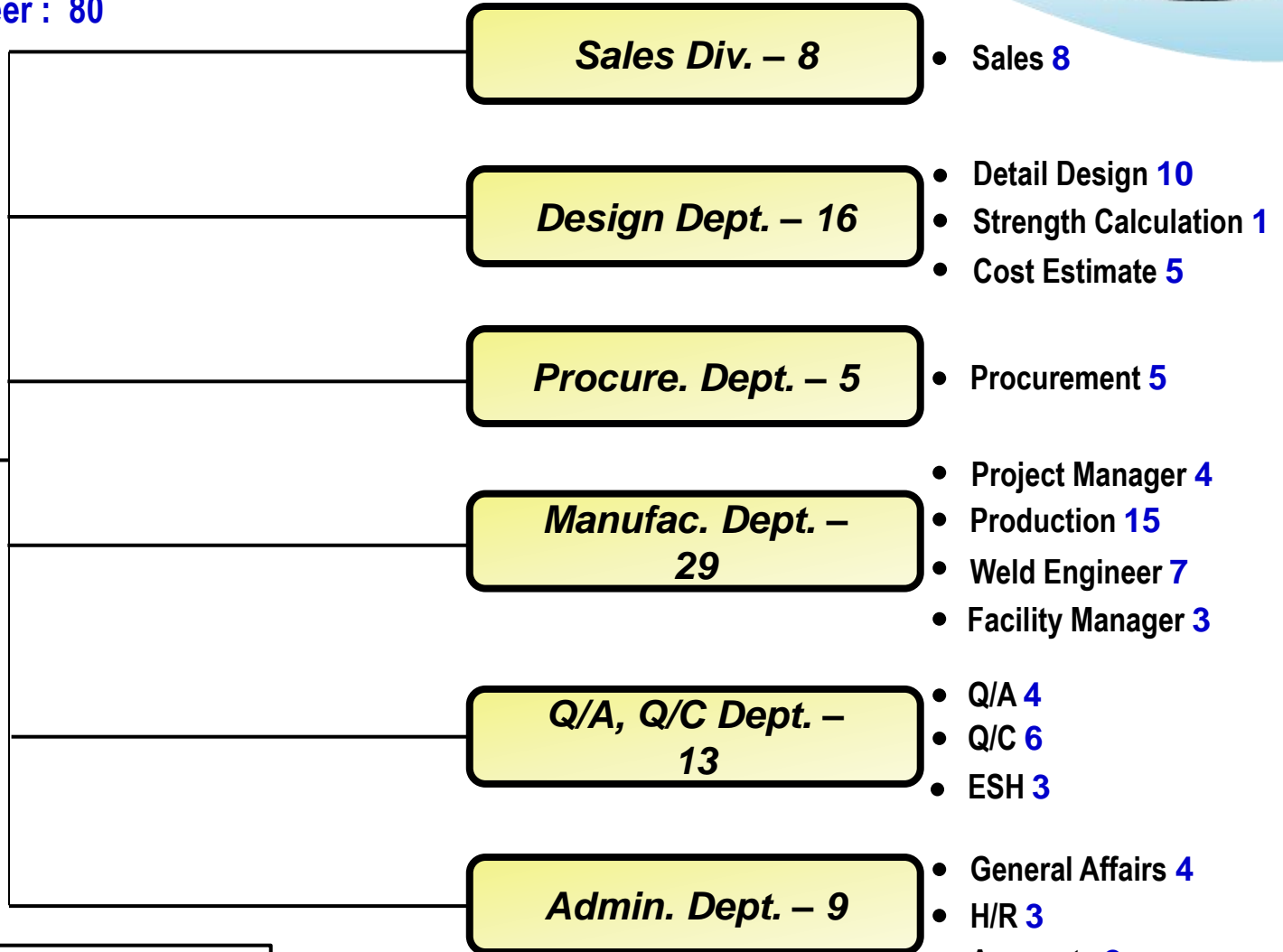


Area : 190,000 m²
 Shop : 43,000 m²

3. Organization Chart

* Total Engineer : 80

C.E.O.



* In-house Sub-vendor : 202



4. Design Abilities

Applicable Code

- ASME Sec. I
- ASME Sec. VIII DIV.1 / DIV.2
- PD5500 / PED / EN13445
- API 620/650
- HEI / TEMA

Stress, Fatigue and Creep Analysis

Thermal Rating for H/E

Software

- COMPRESS
- PV-ELITE
- HTRI
- ANSYS
- ASPEN SHELL & TUBE MECHANICAL



5. Certificates



**ASME
'S'**

**ASME
'U'**

**ASME
'U2'**

**ISO
9001**

**ISO
14001**

**OHSAS
18001**

6. Maximum Capacity Overview



Description	Capacity
Product	60,000 Ton/Year (5,000Ton/Month)
Handling	In-door : 2,000Ton/Item Out-door : 3,000Ton by Jack-up System
Transportation	3,000 Ton per One Unit
Fabrication	15,000mm(ID) x 200,000mm(L)
Plate Bending	260mm(T) x 4,000mm(W) : By Cold
Hydraulic Press	12,000Ton
Furnace	A: 12M(W) x 13M(H) x 25M(L)
Flooring Loading (Weight)	40Ton / m ²

7. Major Facilities



Over Head Crane

250Ton (H: 25M)	2 Sets
100Ton (H: 17M)	2 Sets
50Ton (H: 12M)	2 Sets
35Ton	7 Sets
20Ton	3 Sets
20Ton Magnetic	2 Sets
10Ton	2 Sets



Hydraulic Press

12,000Ton x 8,000mm(W)
3,000Ton x 4,600mm(W)

7. Major Facilities



Bending Roller

3-Roll Type
: 260mm(T) x 4,000mm(W)
By Cold

4-Roll Type
: 76mm(T) x 4,000mm(W)
By Cold



Turning Roller

600Ton	2 Sets	100Ton	32 Sets
300Ton	4 Sets	50Ton	20 Sets
200Ton	4 Sets	30Ton	21 Sets
		10Ton	12 Sets

7. Major Facilities



**Vertical
Turning Lathe**

- Ø6,000 x H3,000 1 Set
- Ø4,000 x H2,500 1 Set
- Ø3,000 x H2,500 1 Set



CNC BTA M/C

- 6,000(X) x 3,000(Y) 1 Set
- 4,000(X) x 2,250(Y) 1 Set

7. Major Facilities



**CNC Drilling
M/C**

W6,000 x L6,000 x H800 1 Set

W5,000 x L5,000 x H800 1 Set

W3,000 x L4,000 x H600 1 Set



**Horizontal
Lathe**

Ø750 x H3,000 1 Set

Ø1,300 x H8,000 1 Set

7. Major Facilities



**Radial
Drilling M/C**

300 L 1 Set

200 L 1 Set



**NC Milling
M/C**

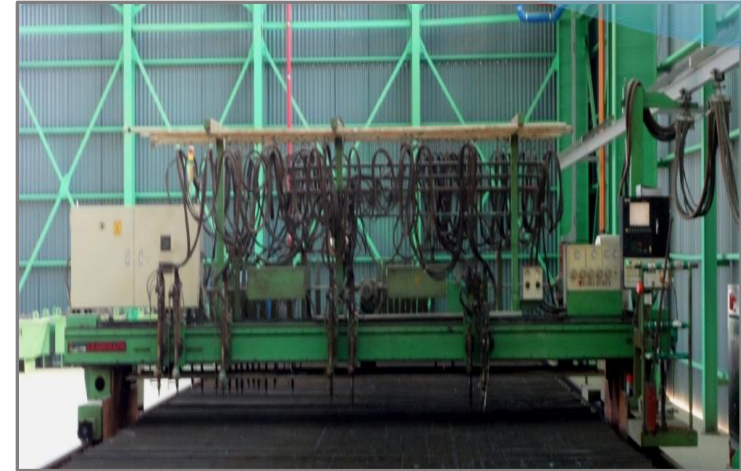
2,500(X) x 900(Y) 1 Set

7. Major Facilities



**Welding
Positioner**

- 100 Ton 1 Set
- 50 Ton 1 Set
- 5 Ton 1 Set
- 1 Ton 1 Set



**Marking /
Cutting**

5.2m(W) x 35m(L) 1 Set

7. Major Facilities



Furnace (300 Ton)

Treatment : PWHT, S/R & Normalizing
Dimension : 12m(W) x 13m(H) x 25m(L)
Temperature : Max. 950 °C ±10 °C



R/T Shop

20m(W) x 16m(H) x 40m(L) 1 Bldg
40m(W) x 4m(H) x 40m(L) 1 Bldg

7. Major Facilities



Shot Shop

25m(W) x 16m(H) x 55m(L) 2 Bldg



Paint Shop

25m(W) x 16m(H) x 55m(L) 1 Bldg

20m(W) x 16m(H) x 55m(L) 2 Bldg

8. Experience List



● Heat Exchanger

Client / End-User	PJT / Site	Equipment Name	Material	Size (Th'k x I.D x TL)	Q'ty	Weight (Ton)	Delivery
Honam Petrochemical	3EG Plant / Daesan, Korea	Glycol Bleed Flasher Reboiler	A240-304 / A213-TP304	10/6t x 720 x 6,000	1	22.5	Nov. 2010
Honam Petrochemical	3EG Plant / Daesan, Korea	Glycol Bleed Flasher Reboiler	A240-304 / A213-TP304	10/6t x 720 x 6,000	1	22.5	Nov. 2010
GS Caltex	Replacement / Yeosu, Korea	2nd Stage Ejector Condenser	A516-60 / A213-304	10/6t x 1,120 x 9,144	1	32.7	Jan. 2011
Hi-Tech. Eng'g / Honam Petrochemical	HPEO / Daesan, Korea	EO Purif. Column OVHD Condenser	A240-304 / A213-TP304	11/10t x 2,400 / 2,492 x 6,000	1	67.6	Jun. 2011
GS Caltex	No.1 NHT Hot Separator / Yeosu, Korea	NHT Stripper BTM / Debutanizer Feed Exchanger	A516-70 / A179	16/15t x 940 x 6,096	2	24.0	Aug. 2011
Samsung Engineering / Honam Petrochemical	BTX PJ (HPCEM2) / Yeosu, Korea	Recovery Column Lower Reboiler	A516-60 / A179	10 x 940 x 2,000	1	1.4	Nov. 2011
		Recovery Column Upper Reboiler	A516-60 / A179	13 x 586.9 x 1,600	1	3.4	Nov. 2011
GS Caltex	VGO FCC Project / Yeosu, Korea	Direct Fired Air Heater	A516-70 / A179	35 x 2600 x 9600	1	42.0	Dec. 2011

8. Experience List

● Heat Exchanger



Client / End-User	PJT / Site	Equipment Name	Material	Size (Th'k x I.D x TL)	Q'ty	Weight (Ton)	Delivery
GS Caltex	T Project / Yeosu, Korea	Hydrocabon DFE Heat Exchanger	A516-60 / A179	21t × 1,600 × 6096	1	24.5	Dec. 2011
		Solvent Pregenerator Reboiler	A240-304L / A213 TP304L	16t × 1,500 × 6,096	1	9.8	
		Benzen Column Reboiler	A516-60 / A179	18t × 1,500 × 6,096	1	13.6	
		Spliter Reboiler	A516-60 / A179	8t × 500 × 3,046	1	5.3	
		C3/C4 Splitter Reboiler	A516-60 / A179	11t × 1,400 × 6,096	1	11.7	
GS Caltex	P Project	RFCC HCO/BFW Exchanger	A387-5 CL.1 / A199-T5	13t × 550 × 8,878	1	6.1	Feb. 2012
		LCO PA/Fresh Feed Exchanger	A516-60 / A179	14t × 1,520 × 9,144	3	134.0	
		TOP PA/Fresh Feed Exchanger	A516-60 / A179	14t × 1,520 × 9,144	3	18.2	
		Compressor Interstage Condenser	A516-60 / A179	13t × 1,110 × 9,144	2	40.1	

8. Experience List

● Heat Exchanger



Client / End-User	PJT / Site	Equipment Name	Material	Size (Th'k x I.D x TL)	Q'ty	Weight (Ton)	Delivery
GS Caltex	P Project / Yeosu, Korea	High Pressure Seperator Condenser	A516-60 / A179	26t × 1,520 × 9,145	2	74.8	Feb. 2012
		C5 Product Cooler	A516-60 / A179	13t × 650 × 6,100	1	3.5	
		P-P Product Cooler	A516-60 / A179	15t × 490 × 6,100	1	2.3	
		HP STEAM Heater	A516-60 / A179	12t × 550 × 4,200	1	2.3	
		L.G.O P.A/Crude Exchanger	A516-60 / A179	13t × 1,120 × 6,100	1	12.0	
		WARM RESIDUE/Crude	A516-60 / A179	13t × 1,100 × 6,100	1	10.9	
		1 Desalted Crude Exchanger	A516-60 / A179	15t × 1,100 × 9,000	3	47.9	
		Stabilizer Feed/Bottoms	A516-60 / A179	20t × 750 × 6,100	1	5.0	
		1RAW Crude Exchanger	A516-60 / A179	18t × 1,100 × 9,000	2	39.2	
		2RAW Crude Exchanger	A516-60 / A179	15t × 1,100 × 6,100	1	11.2	
2RAW Crude Exchanger	A516-60 / A179	15t × 1,200 × 6,101	1	12.5			

8. Experience List



● Heat Exchanger

Client / End-User	PJT / Site	Equipment Name	Material	Size (Th'k x I.D x TL)	Q'ty	Weight (Ton)	Delivery
GS Caltex	P Project / Yeosu, Korea	Kerosene Trim Cooler	A516-60 / A179	13t × 1,000 × 6,100	1	9.8	Feb. 2012
		Deethanizer Feed Bottom Exchanger	A240-304 / A213-TP304	13t × 450 × 4,000	1	2.1	
		TRIM Cooler	A516-60 / A179	13t × 600 × 6,000	1	2.1	
		Combined Feed Cold Reactor Effluent Exchanger	A516-60 / A179	20t × 850 × 4,880	1	7.7	
		Stabilizer Feed/Bottoms Exchanger	A516-60 / A179	13t × 680 × 3,050	1	3.9	
		Stripper Feed Bottoms Exchanger	A516-60 / A179	15t × 450 × 6,100	1	2.8	

8. Experience List

● Columns

Client / End-User	PJT / Site	Equipment Name	Material	Size (Th'k x I.D x TL)	Q'ty	Weight (Ton)	Delivery
Daewoo E&C / Kumho P&B	KPA II PJ / Yeosu, Korea	Crue AMS Column	A240-304	34~26t × 1,800 / 2,200 × 51,600	1	100.2	May. 2011
Samsung Engineering / Honam Petrochemical	BTX PJ (HPCEM2) / Yeosu, Korea	Product Demethanizer	A240-304	10~8t × 2,000 × 23,800	1	22.7	Nov. 2011
		Deethanizer No.2	A537-CL.1+S5	37~21t × 2,100 × 43,350	1	99.8	
		Ethylene Fractionator No.2	A537-CL.2	110~21t × 3,000 × 84,900	1	492.6	
		Propylene Fractionator No.3	A516-70N	36t × 4,500 × 84,200	1	458.0	
		Depropanizer No.3	A516-70N+IMP.	30~10t × 1,700 × 38,500	1	58.5	
Samsung Engineering / Honam Petrochemical	BTX PJ (HPCEM2) / Yeosu, Korea	Pre-Distillation Column	A516-70N+S5	19~13t × 2,500 × 41,100	1	58.5	Nov. 2011
		Extractor	A240-304	41~10t × 1,300 × 35,800	1	100.15	
		Sulfolane Stripper	A516-60	32~10t × 1,300 × 30,100	1	57.6	
		Recovery Column	A516-60	28~10t × 1,400 /2,500 × 35,700	1	37.9	

8. Experience List



● Columns

Client / End-User	PJT / Site	Equipment Name	Material	Size (Th'k x I.D x TL)	Q'ty	Weight (Ton)	Delivery
GS Caltex	VGO FCC Yeosu, Korea	Direct Fired Air Heater	A516-70 Refractory Lining	22t × 2,600 × 9,600	1	30	Dec. 2011
		Incinerator & Stack	A516-70 Refractory Lining	19~12t × 3,600/ 2,200 × 58,700	1	167.4	Oct. 2011
Petrofac / Turkmengas	South Yoloten Gas Field Development / Turkmenistan	Reaction Furnace	A516-70N Refractory Lining	20t × 4250 × 12,900	4	151	Feb. 2012
		Thermal Oxidizer	A516-70N Refractory Lining	25t × 4200 × 15,100	4	286	
GS Caltex	No.3 HOU / Yeosu, Korea	Incinerator With Stack	A516-70 Refractory Lining	35~20t × 2,000/2,500/ 3,600/6,200 × 58700	1	125	Sep. 2011

● Reactor

Client / End-User	PJT / Site	Equipment Name	Material	Size (Th'k x I.D x TL)	Q'ty	Weight (Ton)	Delivery
Samsung Engineering / Honam Petrochemical	BTX PJ (HPCEM2) / Yeosu, Korea	Acetylene Converter	A516-70N+IMP.	42t × 3,900 × 15,200	2	200.0	Oct. 2011
		MAPD Converter	A387-11CL.2	28t × 1,800 × 7,400	1	65.7	

8. Experience List

● Pressure Vessel

Client / End-User	PJT / Site	Equipment Name	Material	Size (Th'k x I.D x TL)	Q'ty	Weight (Ton)	Delivery
Nardis Energy	Foroozan Offshore Complex / Iran	Potable Water P.Vessel	A240-304	35t × 2,900 × 7,800	4	148	Feb. 2011
SPP Youlchon Energy	Air Receiver Tank for compressor / Korea	Air Receiver Tank	A516-70	32t × 2,600 × 6,510	50	870.8	Aug. 2010
Hyundai Engineering / Honam Petrochemical Corporation	P2(4PE) / Yeosu, Korea	Drain Pot	SA516-70	42t × 1,000 × 1,500	1	1.6	Jun. 2011
		Butene Storage Drum	SA516-70	9t × 4,500 × 6,500	1	33.6	
		Suction Drum	SA516-70	25t × 2,400 × 4,000	1	12.3	
		Suction Drum	SA516-70	18t × 1,600 × 8,000	1	6.16	
		Suction Drum	SA516-70	16t × 2,000 × 3,500	1	11.3	
		Buffer Drum	SA516-70	17t × 1,700 × 3,000	1	6	
		1st Flash Drum	SA516-70	10t × 3,200 × 5,600	1	31.6	
		2nd Flash Drum	SA516-70	23t × 2,400 × 4,200	1	17.9	
		Hexane Stripper Receiver	SA516-70	18t × 2,600 × 5,180	1	7.6	

8. Experience List



● Pressure Vessel

Client / End-User	PJT / Site	Equipment Name	Material	Size (Th'k x I.D x TL)	Q'ty	Weight (Ton)	Delivery
Hyundai Engineering / Honam Petrochemical Corporation	P2(4PE) / Yeosu, Korea	Drainage Drum	A516-70	17t × 3,400 × 4,000	1	17.7	Jun. 2011
		Naoh Receiver Drum	A516-70	17t × 2,800 × 4,200	1	16.2	
		H.P / L.P Seal Oil Drum	A516-70	23t × 1,400 × 2,800	1	3.7	
		Brine Drum	A516-70	11 / 8t × 3,200 × 4,800	1	18.1	
		HP /LP Steam Condenser Drum	A516-70	15t × 2,800 × 4,400	1	13.6	
		Steam Condenser Drum	A516-70	21/11t × 2,400 × 3,000	1	16.8	
		Flare Knock Out Drum	A516-70	18t × 3,800 × 5,600	1	38.7	
		Flare Compressor Suction Drum	A516-70	32t × 2,400 × 4,000	1	12.3	
		Propylene Vaporizer	A516-70	18t × 600 × 1,800	1	2.3	
		Low Polymer Storage Drum	SA516-70	9t × 4,350 × 5,400	1	22.2	
		Fould Receiver Drum	SA516-70	11t × 2,400 × 3,600	1	6.7	
		Drain Pot	SA516-70	12t × 1,000 × 1,500	1	1.6	

8. Experience List

● Pressure Vessel

Client / End-User	PJT / Site	Equipment Name	Material	Size (Th'k x I.D x TL)	Q'ty	Weight (Ton)	Delivery
Hyundai Engineering / Honam Petrochemical Corporation	P2(4PE) / Yeosu, Korea	Mist Separator	SA516-70	9t × 1,500 × 1,500	1	1.9	Jun. 2011
		Hexane Dryer	SA516-70	10t × 1,500 × 2,300	1	8.5	
		Waste HX Receiver	SA516-70	15t × 1,900 × 3,100	1	3.5	
		Waste Hexane Purification Column OVHD Receiver	SA516-70	11t × 1,806 × 2,500	1	3.3	
		Hexane Dryer	SA516-70	10t × 1,200 × 2,500	1	2.5	
		Hexane Stripper	SA516-70	7t × 3,600 × 4,900	1	30	
		Hexane Receiver Vent Condenser	SA516-70	17t × 3,000 × 3,600	1	13.6	
		Drainage Drum	A516-70	17t × 3,000 × 3,800	1	14.2	
		Butene Vaporizer	A516-70	13t × 2,400 × 3,600	1	20.2	
		Drainage Drum	A516-70	17t × 3,400 × 4,000	1	17.7	
Naoh Receiver Drum	A516-70	17t × 2,800 × 4,200	1	16.2			

8. Experience List



● Pressure Vessel

Client / End-User	PJT / Site	Equipment Name	Material	Size (Th'k x I.D x TL)	Q'ty	Weight (Ton)	Delivery
Hyundai Engineering / Honam Petrochemical Corporation	P2(4PE) / Yeosu, Korea	H.P / L.P Seal Oil Drum	A516-70	23t × 1,400 × 2,800	1	3.7	Jun. 2011
		Brine Drum	A516-70	11 / 8t × 3,200 × 4,800	1	18.1	
		HP /LP Steam Condenser Drum	A516-70	15t × 2,800 × 4,400	1	13.6	
		Steam Condenser Drum	A516-70	21/11t × 2,400 × 3,000	1	16.8	
		Flare Knock Out Drum	A516-70	36t × 3,800 × 5,600	1	38.7	
		Flare Compressor Suction Drum	A516-70	32t × 2,400 × 4,000	1	12.3	
		Propylene Vaporizer	A516-70	18t × 600 × 1,800	1	2.3	
		Butene Vaporizer	A516-70	13t × 2,400 × 3,600	1	20.2	
		Naph Decanter	A516-70	36t × 3,200 × 5,100	1	25.6	
		Naph Decanter	A516-70	36t × 3,200 × 5,100	1	25.6	
		Hexane Decanter	A516-70	27t × 3,200 × 5,100	1	25.6	
Water Pot	A106-B	27t × 1,000 × 1,200	1	2.4			

8. Experience List



● Pressure Vessel

Client / End-User	PJT / Site	Equipment Name	Material	Size (Th'k x I.D x TL)	Q'ty	Weight (Ton)	Delivery
Hyundai Engineering / Honam Petrochemical Corporation	P2(4PE) / Yeosu, Korea	Waste Hexane Feed Funnel	A516-70	7t x 1,200 x 1,200	1	0.9	Jun. 2011
		Drainage Funnel	A516-70	12t x 1,800 x 2,400	6	11.4	
		Waste Hexane Feed Pot	A516-70	15t x 1,200 x 1,205	4	3.6	
		HP Air Receiver	A516-70	67t x 2,800 x 14,650	1	80.6	
		Scrap Cyclone	A516-70	12t x 1,200 x 3,100	1	2.2	
		Scrap Hopper	A516-70	13t x 1,800 x 2,280	1	2.3	
Petrofac / Turkmengas	South Yoloten Gas Field Development / Turkmenistan	Sour Gas Preheater LP Condensate Drum	A516-70N+HIC	18t x 1,000 x 2,200	4	12.8	Dec. 2011
		Amine Flash Drum	A516-70N	15t x 1,500 x 3,600	8	36.7	
		HP Condensate Drum	A516-70N	18t x 1,200 x 2,000	2	5.39	
		LP Condensate Drum	A516-70N	12t x 1,700 x 3,200	2	8.5	

8. Experience List



● Pressure Vessel

Client / End-User	PJT / Site	Equipment Name	Material	Size (Th'k x I.D x TL)	Q'ty	Weight (Ton)	Delivery
Petrofac / Turkmengas	South Yoloten Gas Field Development / Turkmenistan	Disposal Water Drum	A516-70N+HIC	15t × 3,250 × 9,750	2	38.8	Dec. 2011
		HP Flare KO Drum	A240-316/316L DUAL	18t × 3,600 × 23,000	1	57.6	
		ATM Flare KO Drum	A516-70N+HIC	24t × 3,200 × 5,000	1	21.5	
		HP Blowdown Drum	A516-70N	10t × 1,000 × 3,500	1	3.2	
		Degassing Boot	SA516-70N+HIC	18t × 2,500 × 4,300	2	25	
		HP/LP Flash Drum	SA516-70N	23t × 2,700 × 5,200	1	19.3	
		LP Flash Drum	SA516-70N	26t × 3,000 × 13,000	1	40.7	
		Vent Condensae Condensate Drum	SA516-70N	12t × 1,800 × 2,900	1	5.8	
		Nitrogen Receiver	SA516-70N	20t × 3,600 × 11,200	2	64.9	
		1st Stage Reheater Condensate Drum	SA516-70N	20t × 2,000 × 3,600	16	131.7	
		HP Blowdown Drum	SA516-70N	15t × 1,200 × 2,300	4	19.5	
		HP Condensate Flash Drum	SA516-70N	17t × 1,500 × 4,050	4	33.2	

8. Experience List



● Pressure Vessel

Client / End-User	PJT / Site	Equipment Name	Material	Size (Th'k x I.D x TL)	Q'ty	Weight (Ton)	Delivery
Petrofac / Turkmengas	South Yoloten Gas Field Development / Turkmenistan	Acid Gas Preheater Condensate Drum	SA516-70N	25t × 1,800 × 2,900	4	25.2	Dec. 2011
		Sulphur Coalescer	SA516-70N	20t × 3,800 × 4,500	4	117.3	
		LP Condensate Flash Drum	SA516-70N	17t × 1,500 × 4,750	4	25.7	
		LP Blowdown Drum	SA516-70N	17t × 1,500 × 3,400	4	30.4	
GS Construction / Takreer	Inter Refinery Pipeline-2(IRP-II) / U.A.E	LPG Mounded Bullet	SA516-65N	42t × 7,800 × 50,000	4	2529	Jun. 2012
GS Caltex	Yeosu Plant Revamping	Condenser Drum	A516-60	15t × 1,200 × 2,500	1	6.8	Dec. 2011
		Vaporizer	A516-60	12t × 1,500 × 2,400	1	6.3	
		Air Receiver	A516-60	24t × 3,800 × 6,070	1	22.7	

8. Experience List



● Others

Client / End-User	PJT / Site	Equipment Name	Material	Size (Th'k x I.D x TL)	Q'ty	Weight (Ton)	Delivery
Daido Steel / SPP Youlchon Energy	New Steel Melting Shop / Youlchon, Korea	Electric Arc Furnace					
		- Furnace Shell	A516-70 (Refractory)	37t × 6,400 × 6,900	1	82	Jan. 2011
		- Ladle	A516-70 (Refractory)	35t × 3,500 × 4,215	8	280	Mar. 2011
		- Vacuum Tank	A516-70 (Refractory)	35t × 5,800 × 9,300	4	380	Jan. 2011
		- Platform Structure	SS400		1 Lot	461	Mar. 2011
		- Other Auxillary Equipment	SS400		1 Lot	754	Mar. 2011
SPP Ship Building	Cylindrical Shell for Ship / Sunchoen, Korea	Cylindrical Shell	A131-DH36	72t × 2,240/2,860 × 12,600	20	1,100.00	Aug~Dec. 2010
		Cylindrical Shell	A131-DH36	72t × 2,240/2,860 × 10,400	20	960	



SFP Heavy Industries Co., Ltd.

**Final Destination is to be
New Global Leader !!!**

Thank You !

